



# Joint Policing Committee

---

Kerry



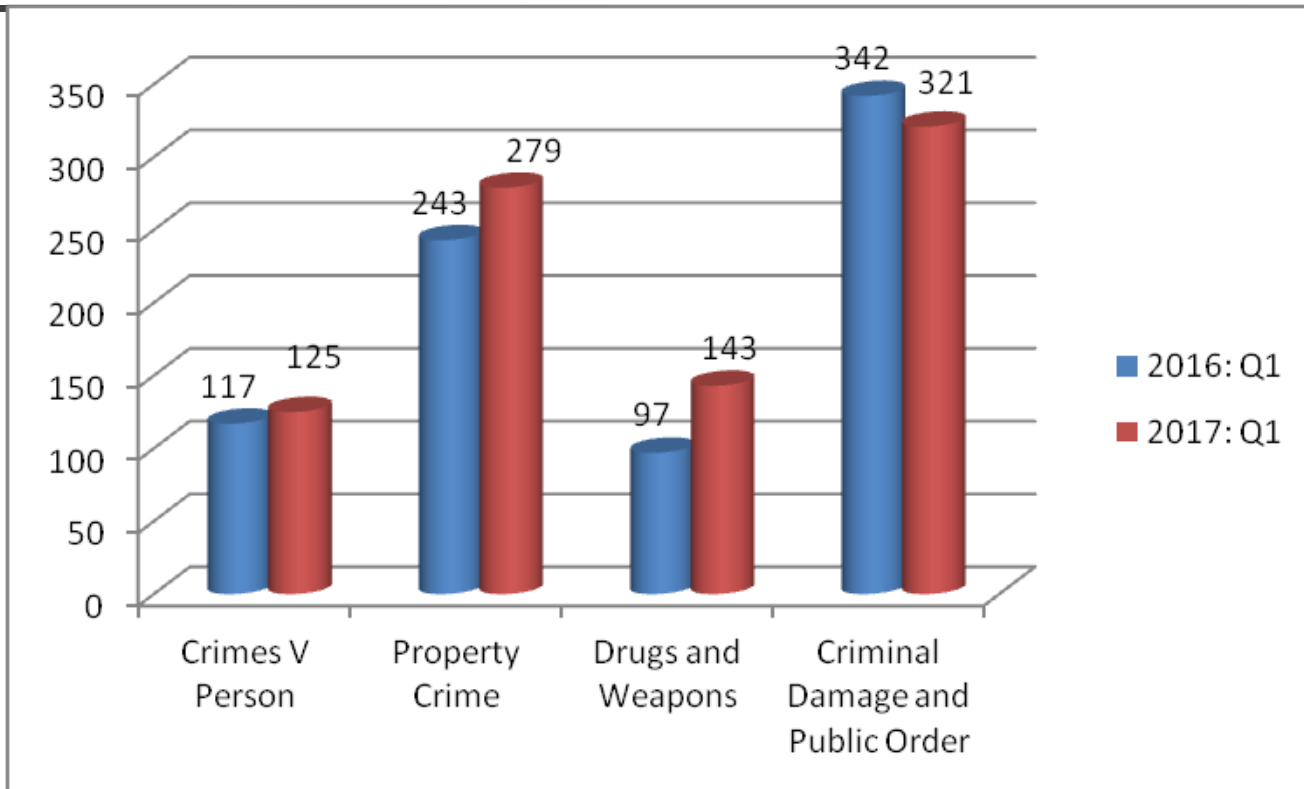
---

# Overview

All subsequent slides deal with data from  
**Q1 2016 – Q1 2017**  
(taken from PULSE system 25/05/2017)

# All Crime

## Q1 2016 v Q1 2017



	Crimes V Person	Property Crime	Drugs and Weapons	Criminal Damage and Public Order
Q1 2016	117	243	97	342
Q1 2017	125	279	143	321
% Change	7%	15%	47%	-6%

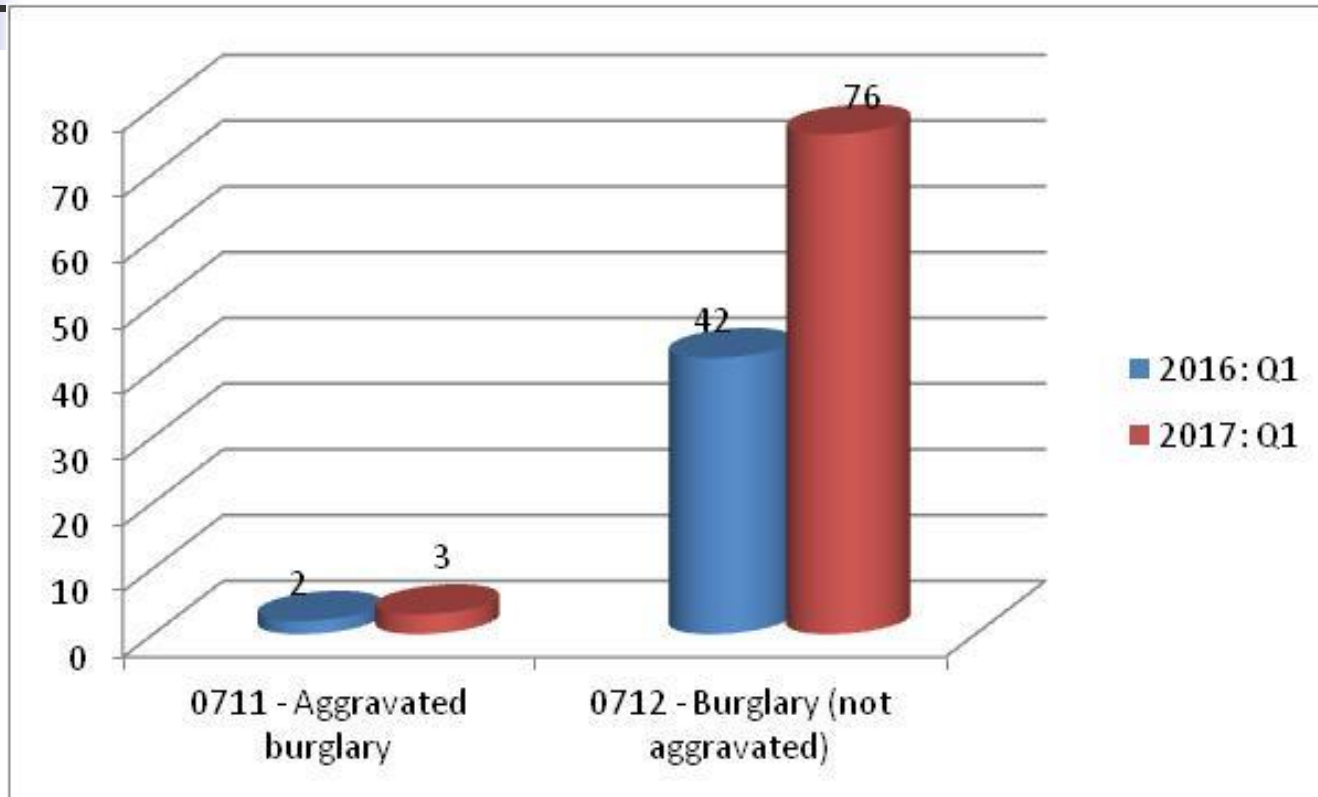


---

# Property Crime

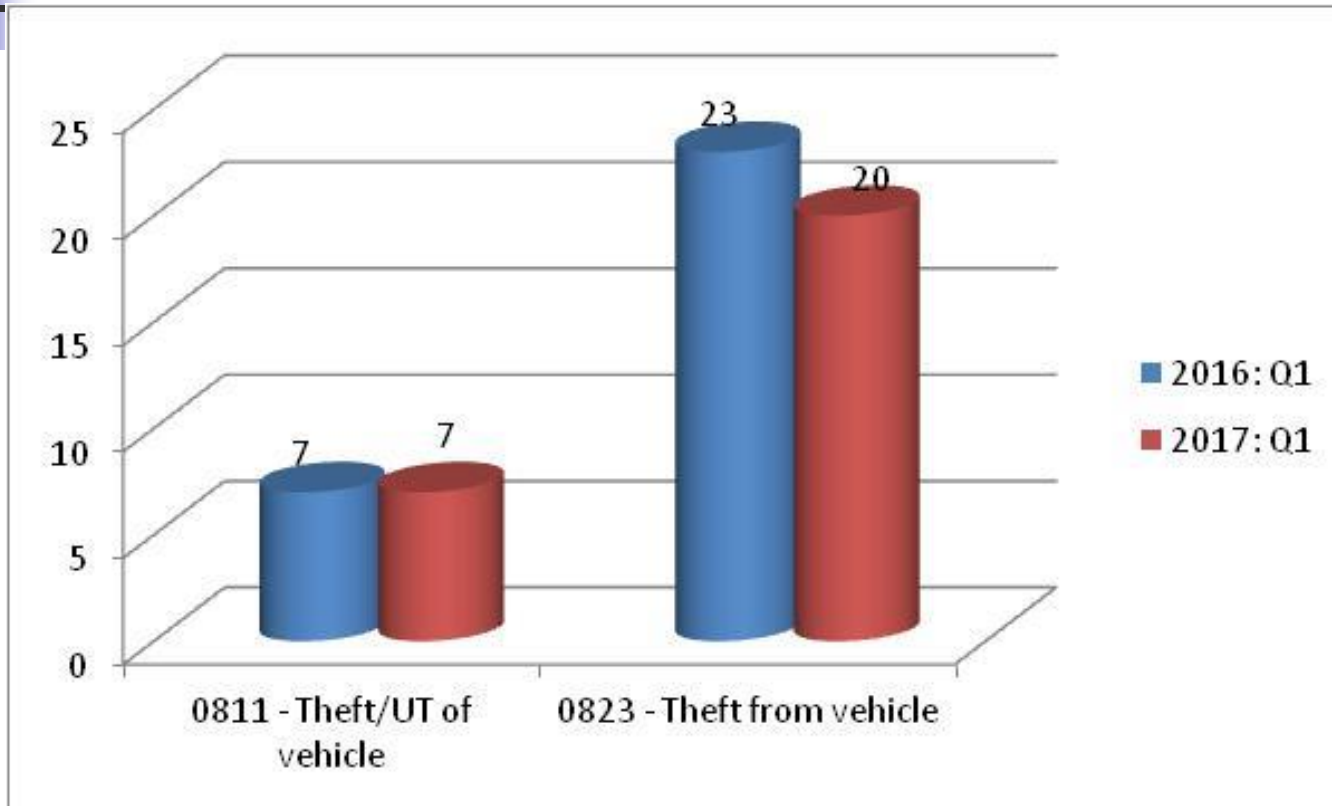
# Burglary

## Q1 2016 v Q1 2017



	0711 - Aggravated burglary	0712 - Burglary (not aggravated)
Q1 2016	2	42
Q1 2017	3	76
% Change	50%	81%

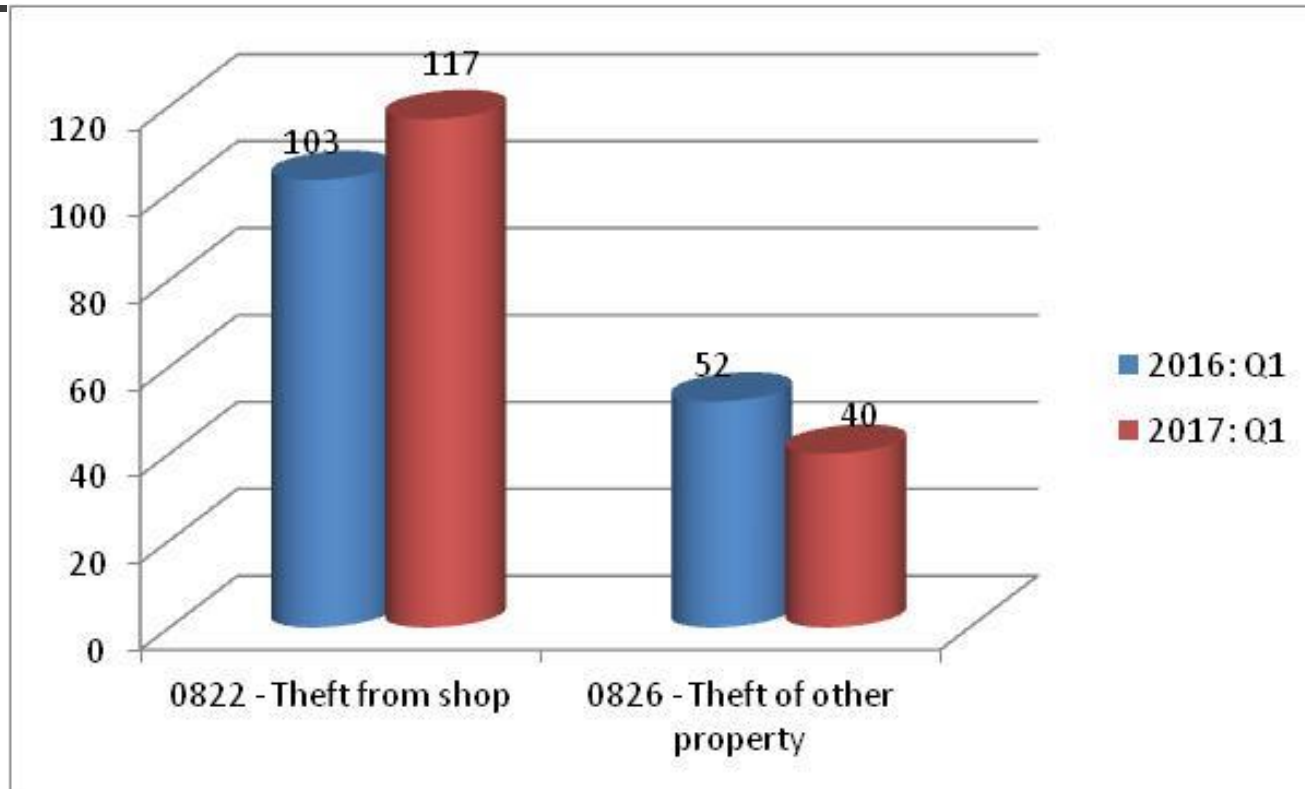
# Theft of vehicle / Theft from Vehicle Q1 2016 v Q1 2017



	0811 - Theft/UT of vehicle	0823 - Theft from vehicle
Q1 2016	7	23
Q1 2017	7	20
% Change	0%	-13%

# Thefts

## Q1 2016 v Q1 2017



	0822 - Theft from shop	0826 - Theft of other property
Q1 2016	103	52
Q1 2017	117	40
% Change	14%	-23%



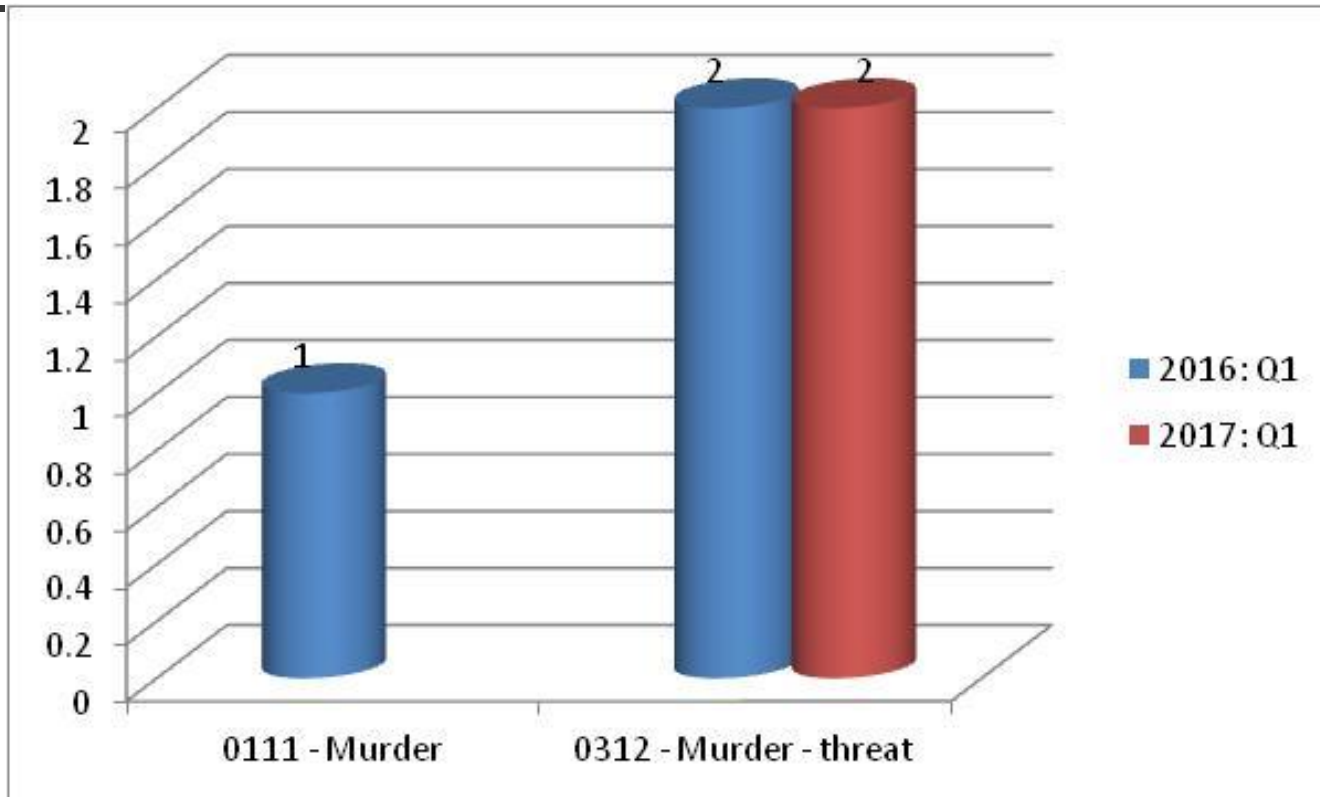
---

# Crimes Against the Person



# Murder & Murder Threats

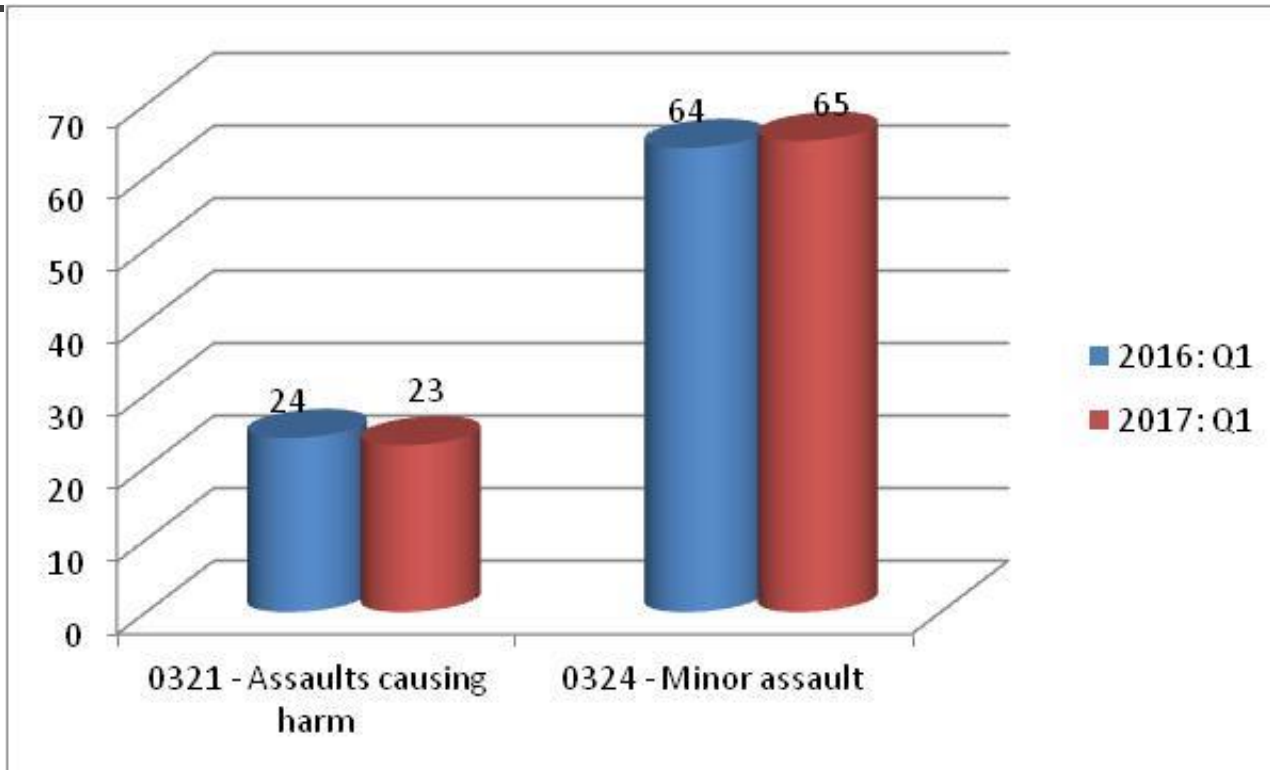
## Q1 2016 v Q1 2017



	0111 - Murder	0312 - Murder - threat
Q1 2016	1	2
Q1 2017	0	2
% Change	-100%	0%

# Assaults

## Q1 2016 v Q1 2017



	0321 - Assaults causing harm	0324 - Minor assault
Q1 2016	24	64
Q1 2017	23	65
% Change	-4%	2%

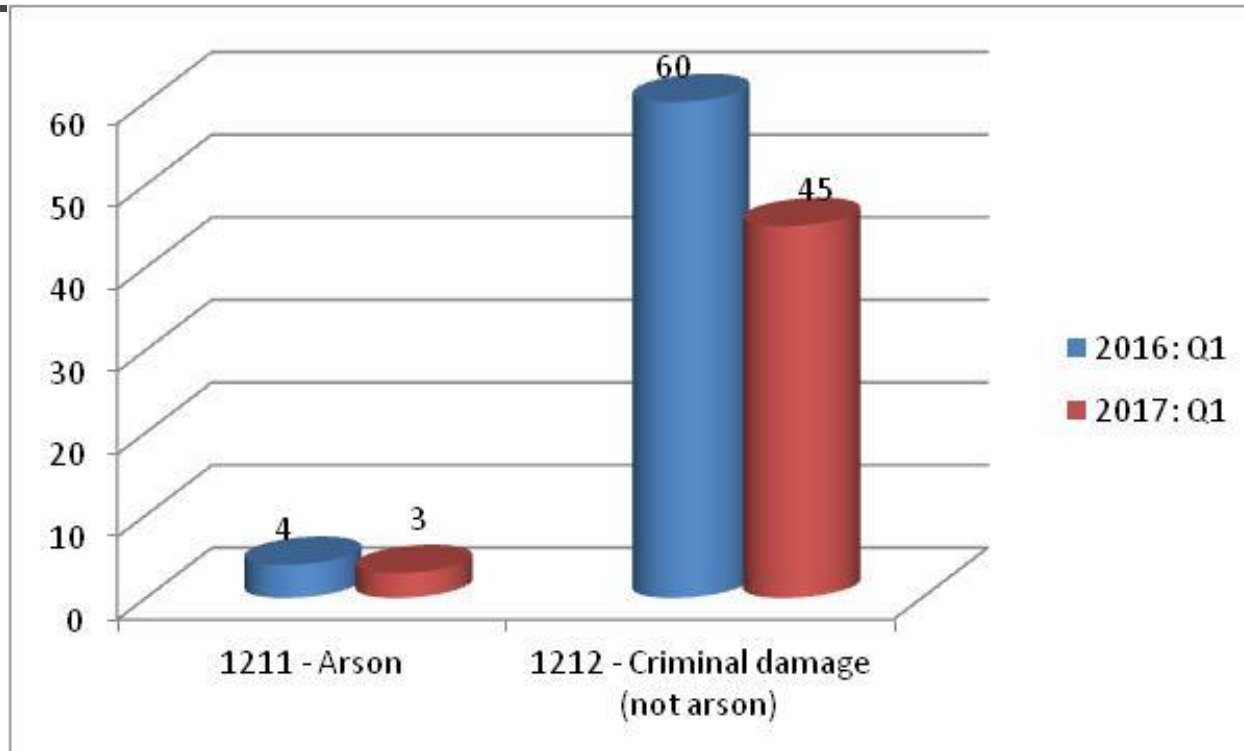


---

# Criminal Damage & Public Order

# Criminal Damage

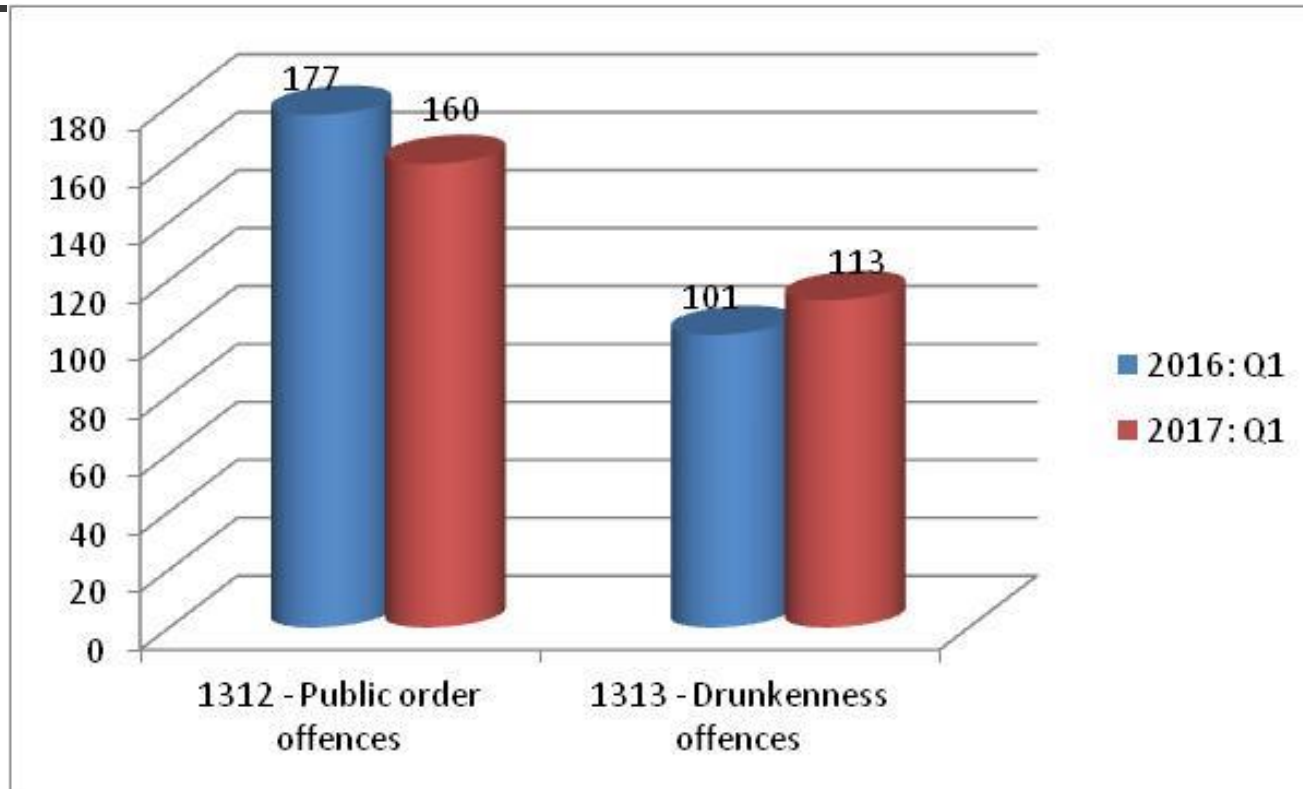
## Q1 2016 v Q1 2017



	1211 - Arson	1212 - Criminal damage (not arson)
Q1 2016	4	60
Q1 2017	3	45
% Change	-25%	-25%

# Public Order

## Q1 2016 v Q1 2017



	1312 - Public order offences	1313 - Drunkenness offences
Q1 2016	177	101
Q1 2017	160	113
% Change	-10%	12%

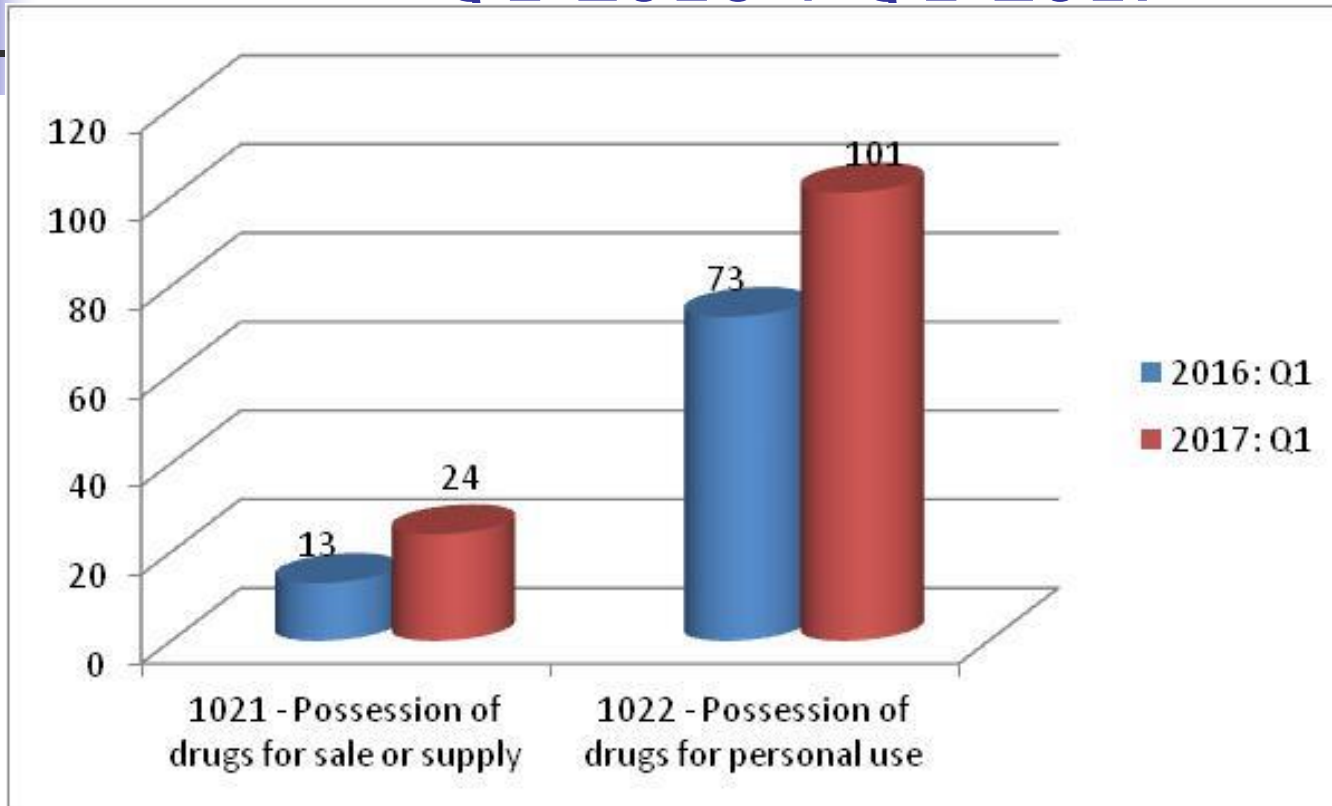


---

# Drugs & Offensive Weapons

# Drugs

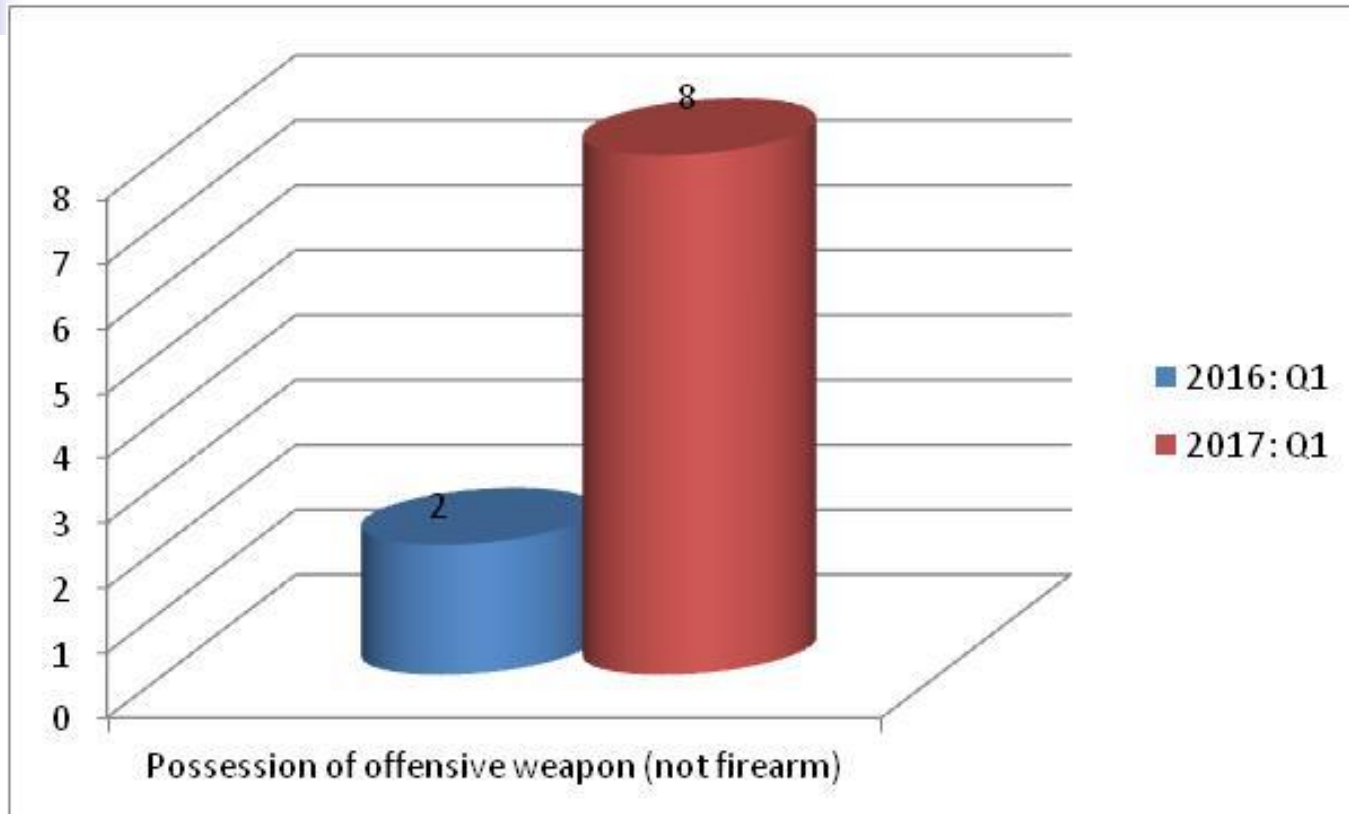
## Q1 2016 v Q1 2017



	1021 - Possession of drugs for sale or	1022 - Possession of drugs for personal use
Q1 2016	13	73
Q1 2017	24	101
% Change	85%	38%

# Possession of Offensive Weapon

## Q1 2016 v Q1 2017



	Possession of offensive weapon
Q1 2016	2
Q1 2017	8
% Change	300%

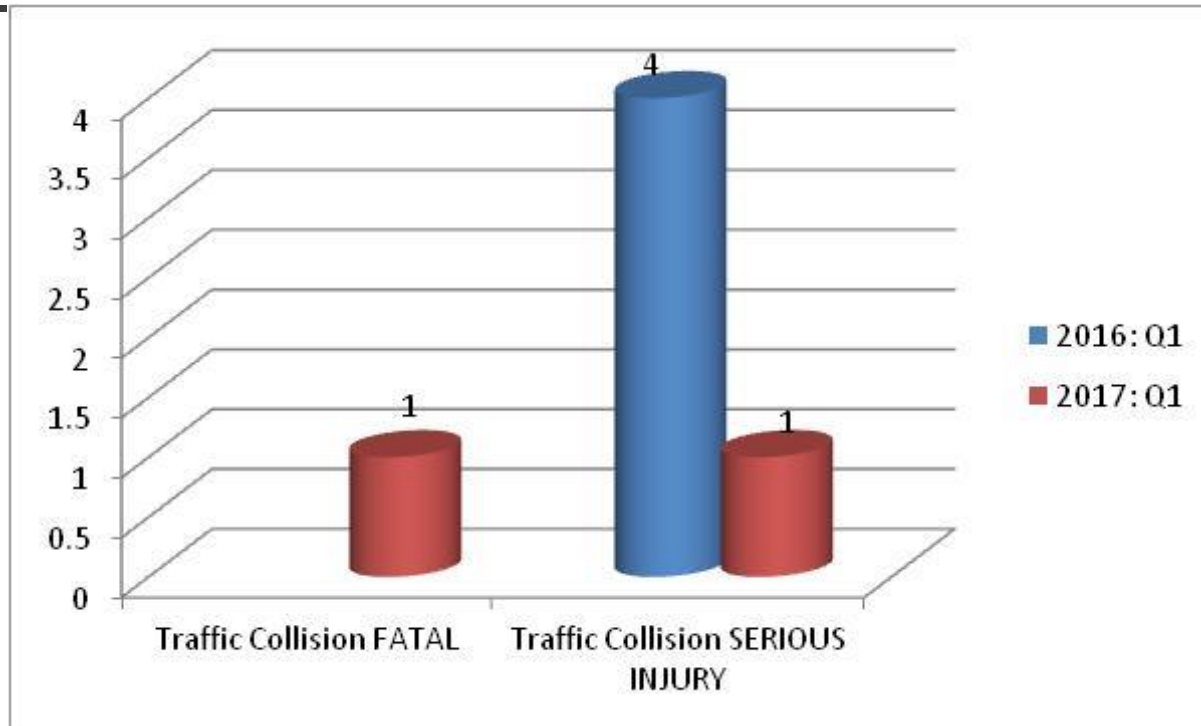




# Traffic

# Traffic Collisions

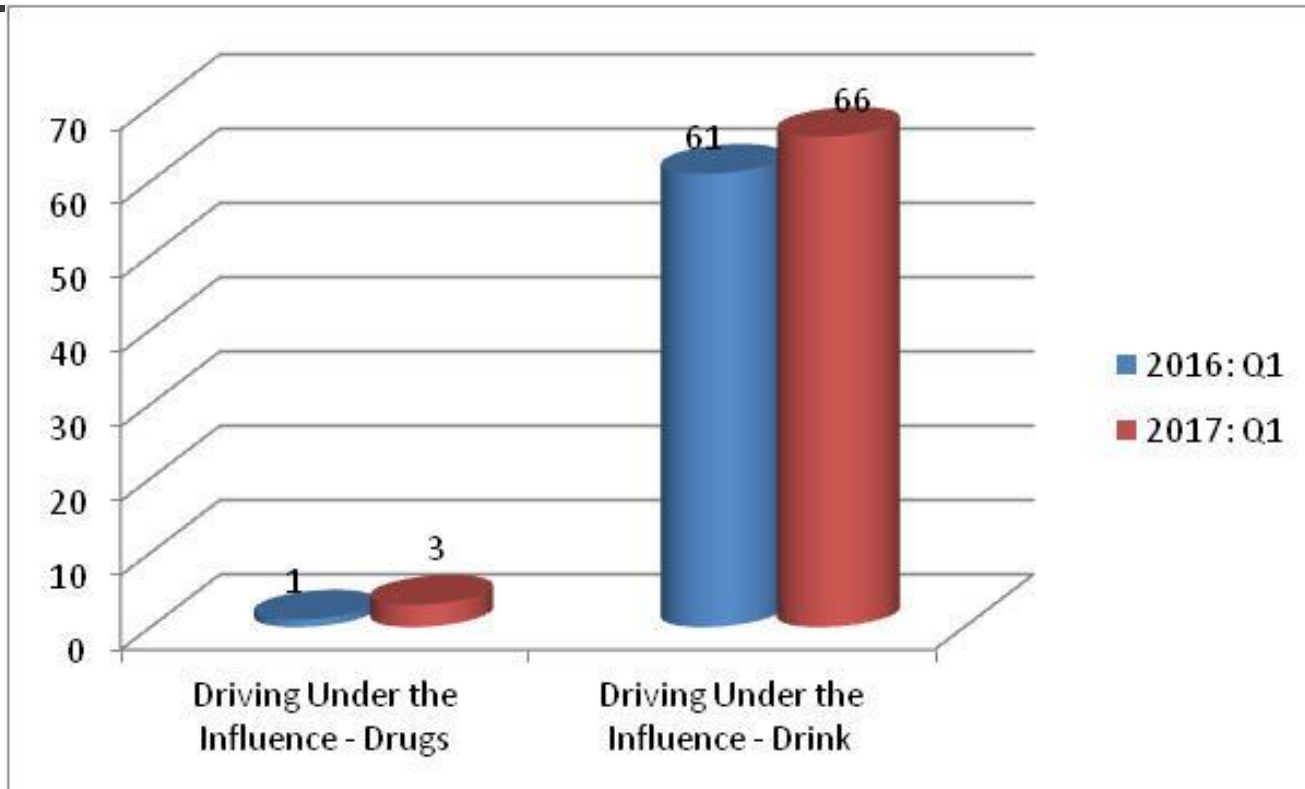
## Q1 2016 v Q1 2017



	Traffic Collision FATAL	Traffic Collision SERIOUS INJURY
Q1 2016	0	4
Q1 2017	1	1
% Change	-	-75%

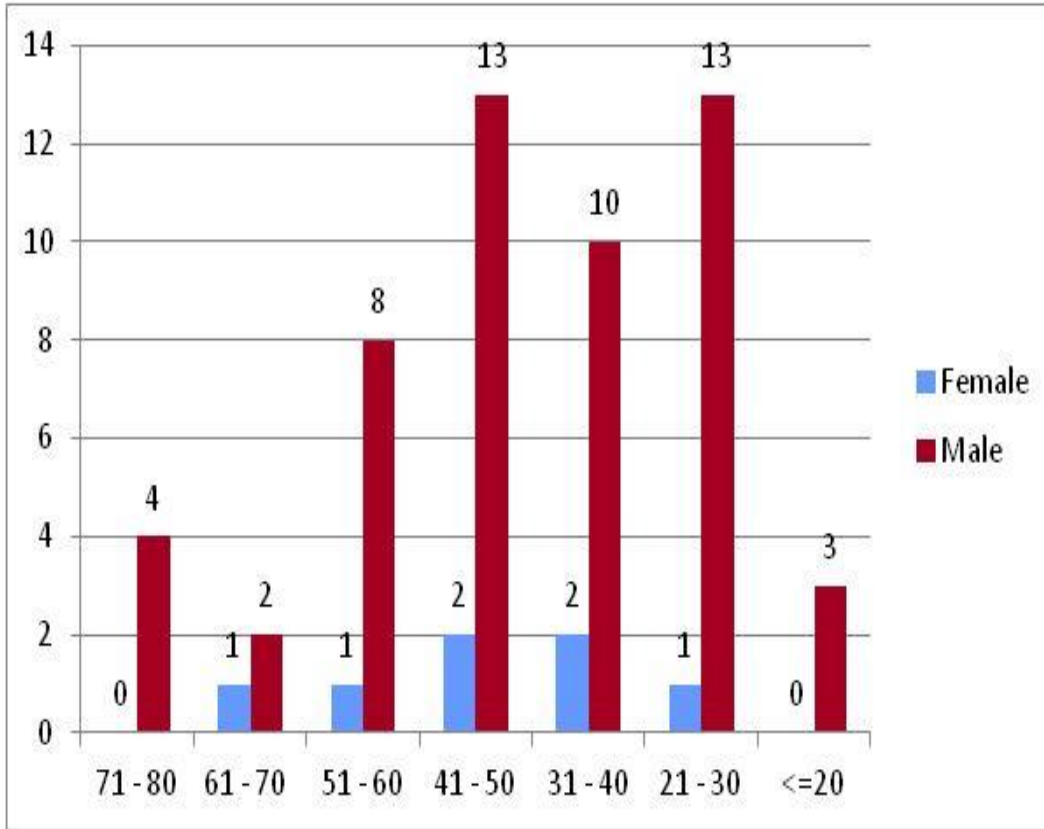
# Intoxicated while Driving

## Q1 2016 v Q1 2017



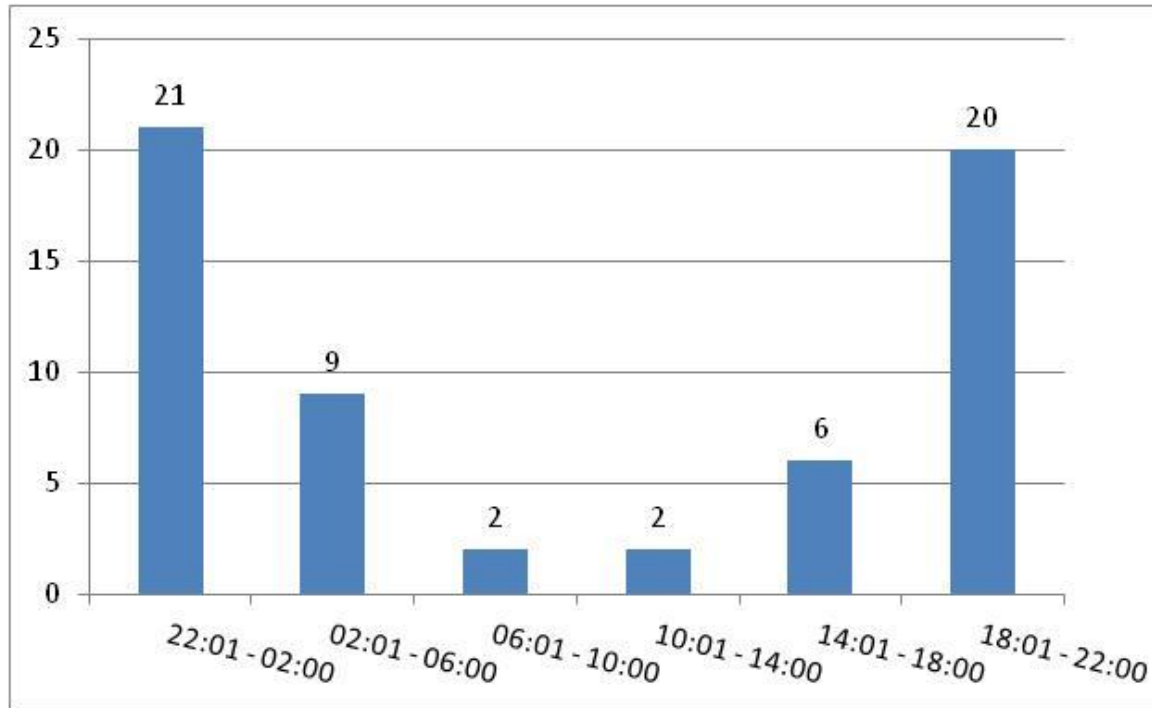
	Driving Under the Influence - Drugs	Driving Under the Influence - Drink
Q1 2016	1	61
Q1 2017	3	66
% Change	200%	8%

# Drink Driving Gender Breakdown by Age for Q1 2017



Age Range	Female	Male	% of overall drunk drivers
71-80	1	3	2%
61-70	2	15	7%
51-60	1	27	11%
41-50	10	33	17%
31-40	10	54	26%
21-30	8	70	31%
<=20	0	14	6%

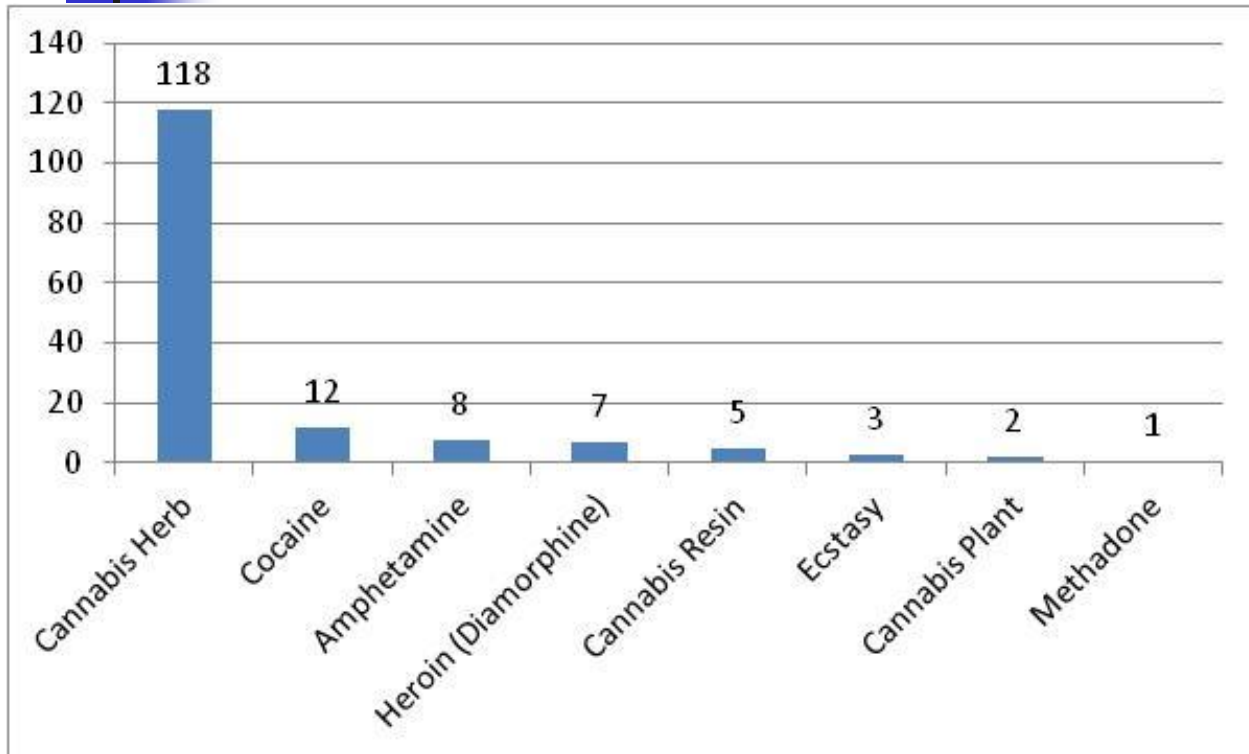
# Time of incident – Drink Driving Q1 2017



Time Period	Count	%
22:01 - 02:00	21	35%
02:01 - 06:00	9	15%
06:01 - 10:00	2	3%
10:01 - 14:00	2	3%
14:01 - 18:00	6	10%
18:01 - 22:00	20	33%

# Types of Drugs Seized

## Q1 2017



Drug Type	Count	%
Cannabis Herb	118	76%
Cocaine	12	8%
Amphetamine	8	5%
Heroin (Diamorphine)	7	4%
Cannabis Resin	5	3%
Ecstasy	3	2%
Cannabis Plant	2	1%
Methadone	1	1%
Total	156	100%